



PERFORMER

GPL 980

Max Lift Capacity 98.000 kg

Innovative Hydraulic System for Hard Track Frame Disassembly

Bosch-Rexroth Components

Caterpillar Engine



PIPELINE MACHINERIES
EURO PIPELINE EQUIPMENT



BASIC MACHINE DATA

ENGINE

| | |
|--------------------|------------------------------|
| Model | Caterpillar C13 ACERT |
| Net Flywheel power | 440HP/328kW |
| Governed speed | 2100 rpm |
| Displacement | 12,5 lt - 4 in line cylinder |

TRANSMISSION

| | |
|---------------|--|
| Type | Hydrostatic closed circuit |
| Brakes | 2 integrated negative control |
| Final drives | Epicycloidal oil soaked |
| Maximum speed | 1 speed - 2.28 km/h 2 speed - 5.25 km/h |

CONTROLS

| | |
|------------|--|
| Type | Hydrostatic Closed Circuit |
| Safety | Emergency shut-off |
| TSS System | Twin steering system to provide with other two levers, to drive the track independently in order to guarantee small and precise movements. |

FLUID CAPACITIES

| | |
|--------------------------|----------|
| Fuel tank | 350 lt |
| Hydraulic System circuit | 400 lt |
| Cooling system | 42 lt |
| Engine oil | 34 lt |
| Final drive each | 30+30 lt |

HYDRAULIC SYSTEM

| | |
|----------------------------|--|
| Main Pumps | 3 independent variable Bosch-Rexroth pumps |
| Maximum capacity | 2x367 lt/min 1x290 lt/min |
| Maximum operating pressure | 420 bar |
| Service pumps | 1 tandem gear pump |

HARD TRACK FRAME

| | |
|--|------------------------|
| Dismountable, sealed and lubricated chain D9H type | |
| Number of bottom roller | 9+9 |
| Number of carrying rollers | 2+2 |
| Gauge | 2,6 m |
| Length of track on the ground | 4,25 m |
| Standard shoes width | 914 mm |
| Ground contact area | 73845 cm ² |
| Option shoes width | 1015mm |
| Ground contact area | 817880 cm ² |

ELECTRIC SYSTEM

| | |
|-------------------------------------|--------|
| Operating voltage | 24 V |
| Maintenance free supplied batteries | 2 |
| Capacity (total) | 160 Ah |
| Starter capacity | 7,5 KW |
| Alternator | 55 A |



PIPELAYING EQUIPMENT

HYDRAULIC WINCHES

| | |
|-------------|---|
| Type | Hydraulic controlled drum reversible Driven by variable flow hydraulic pump and control valve block in open circuit |
| Final drive | Compact hydrostatic drive unit, three-stage planetary gear |

HOOK AND BOOM

| | |
|---------------------|------------|
| Drum diameter | 400 mm |
| Flange diameter | 590 mm |
| Drum length | 363 mm |
| Capacity | 136 m |
| Wire rope installed | 120 m |
| Hook speed | 0-16 m/min |

BOOM

| | |
|-----------------------------|-----------------------------------|
| Type | 9,1m welded box square section |
| Diameter wire rope | 19 mm |
| Min. breaking strength rope | 323 KN |
| Part load line | 8 |
| Part boom line | 6 |

ADJUSTABLE COUNTERWEIGHTS

| | |
|-------------------------|---|
| QD-CS | Quick-disconnected counterweight system. For the possibility of disassembly in a short time (all the counterweight pack). |
| Removable Counterweight | 18 leaves 583 Kg |
| Total weight extendable | 11000 Kg |

WINCH SPECIFICATIONS

MAIN PUMP

| | |
|------|--|
| Type | Bosch-Rexroth axial piston variable displacement pump |
|------|--|

VALVES

| | |
|------------------|---|
| Type | Bosch load-sensing mobile control block proportional directional valves |
| Working pressure | 320 bar |

CONTROL

| | |
|------|---|
| Type | Pilot units for remote control of winch motors |
|------|---|

SERVICE PUMP

| | |
|------------------|-----------|
| Type | Gear pump |
| Max capacity | 10 lt/min |
| Working pressure | 30 bar |

OPTIONAL

- Closed cabin
- Air conditioning
- Rear Winch

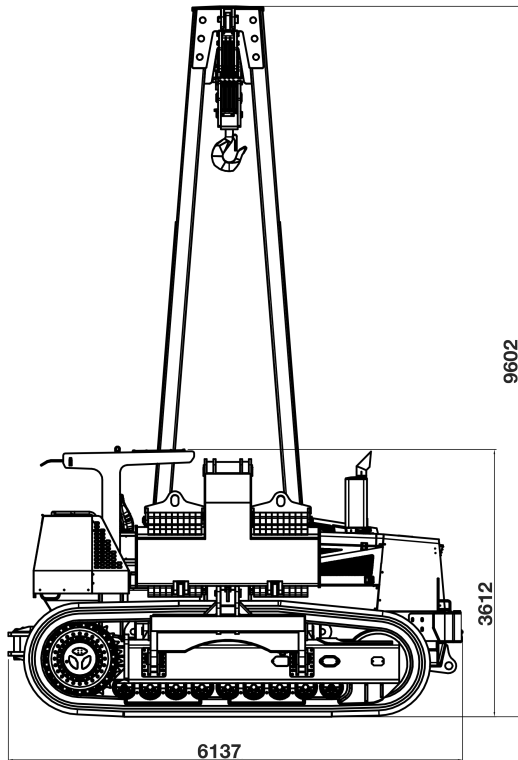
FEATURES

- CE Approval Design
- ROPS/FOPS designed in such way to allow the operator a clear view of the top of the boom and the load
- Rear Winch

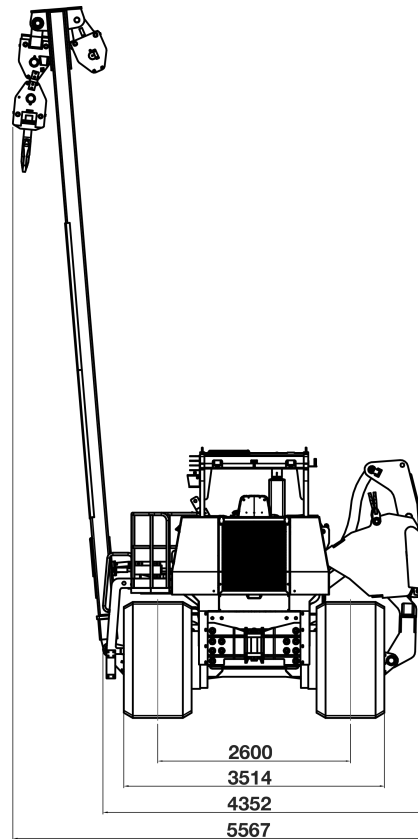
SAFETY

- Anti - Tipping System
- Electronic Boom Kick-out
- Free Fall

DIMENSIONS AND WEIGHTS



Dimensions are in millimeters



OPERATIONAL WEIGHT 61,000 KG

TRANSPORT DIMENSIONS For the transport of a machine will need 3 open-top containers
For the transport of 2 machines are enough 5 open-top containers



EURO PIPELINE EQUIPMENT SPA

Strada Provinciale 6 bis
Località Cascine Draghi
29013 Carpaneto Piacentino (PC)
ITALY

Registered Office

via Pontaccio 8
20121 Milan
ITALY

Telephone +39 0523 852064

info@europipeline-equipment.com

www.europipeline-equipment.com



PIPELINE MACHINERIES
EURO PIPELINE EQUIPMENT